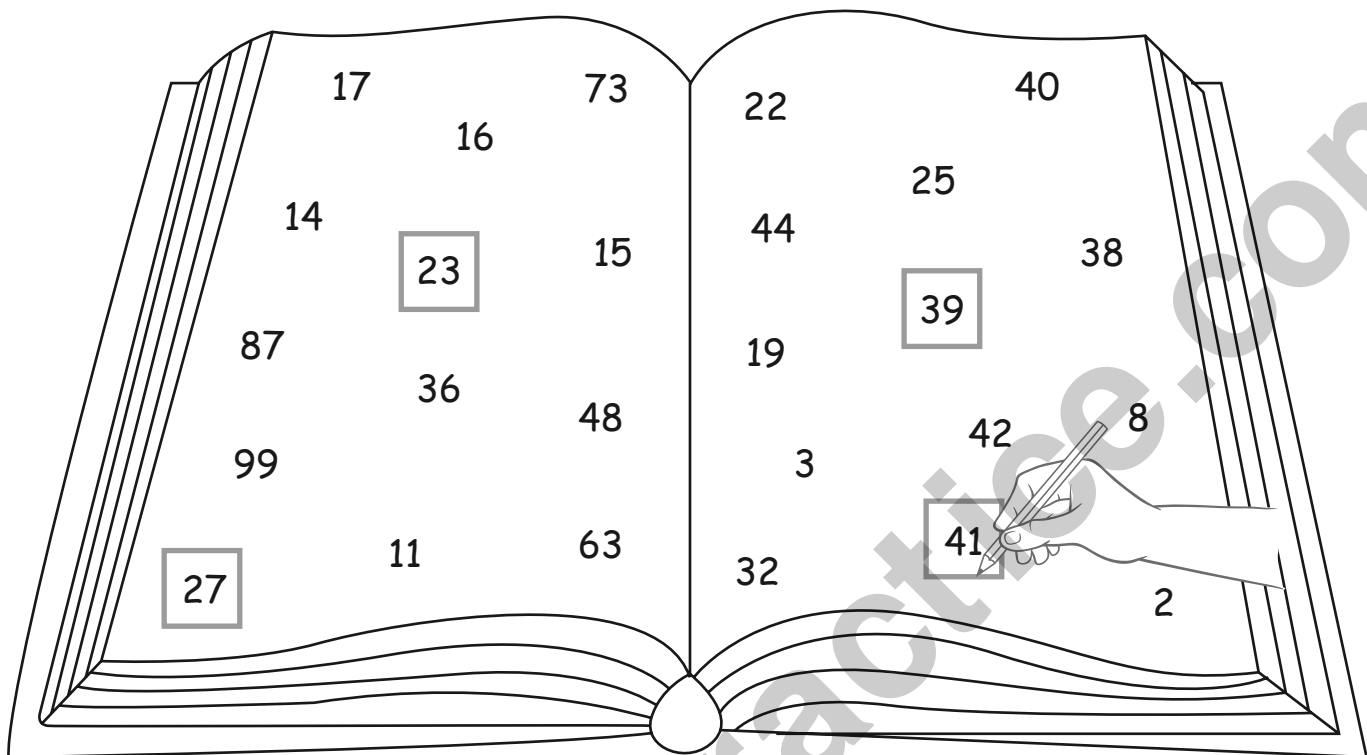


Even and Odd Numbers

Help Ruby to mark numbers according to the clues given below.



Put a around the odd numbers lying between 20 and 45.

a) Put a around even numbers which are less than 30.

b) Put a around the odd numbers which are greater than 60.

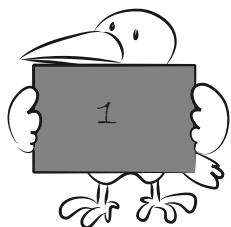
c) Put a cross 'X' on odd numbers less than 20.

d) Put a tick '✓' on even numbers lying between 30 and 50.

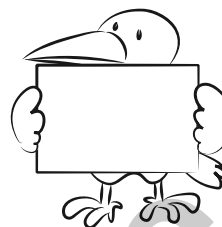
Learning 3-Digit Numbers

Answer the following using the given clues.

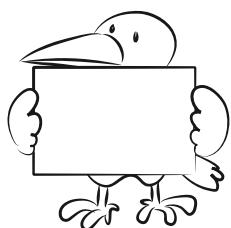
Smallest 1 digit number



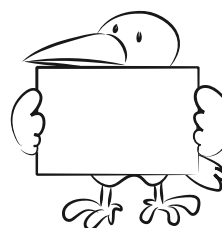
a) Largest 2 digit number



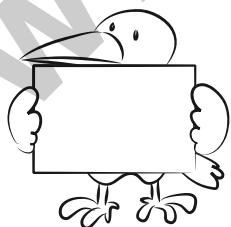
b) Smallest 2 digit number



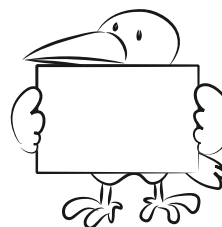
c) Largest 1 digit number



d) Largest 3 digit number



e) Largest 3 digit number



Arrange these answers in ascending order.

--	--	--	--	--	--