

Hide And Seek

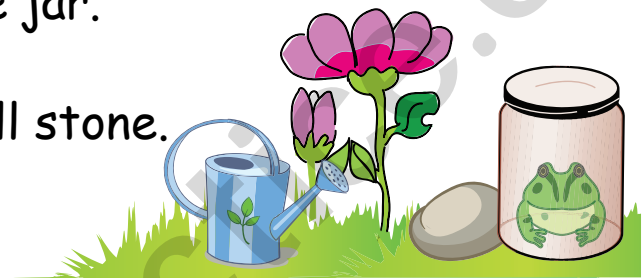
Complete the given sentence with suitable preposition **behind** or **near** or **inside**. Refer to the pictures to fill the blanks.

Use Me!

a) The flower is behind the watering can.

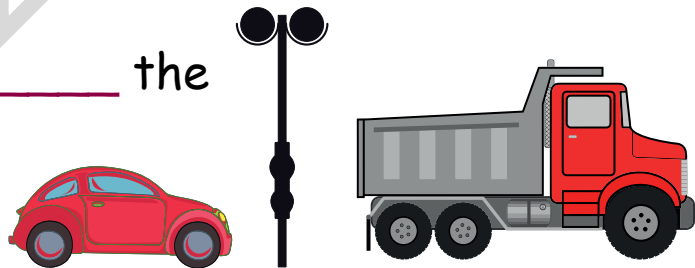
b) The frog is _____ the jar.

c) The jar is _____ a small stone.



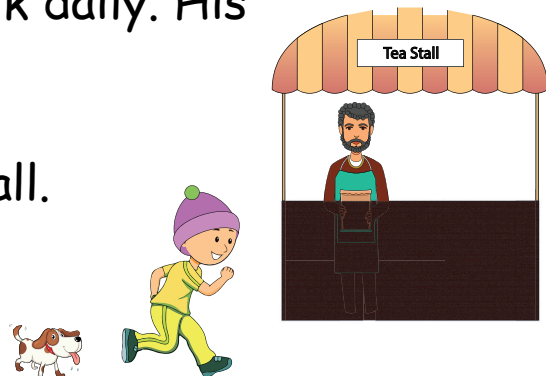
d) I have a red car. It is _____ the big truck.

e) I can see a pole _____ the truck and my car.



f) Kunal goes for morning walk daily. His dog walks _____ him.

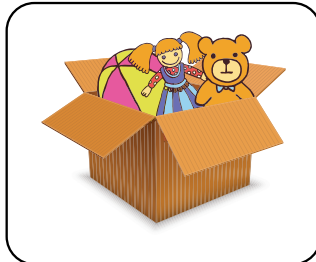
g) Kunal is _____ a tea stall.



Strike Off The Wrong

Observe the given picture. Two options are given for each picture. Strike off ☒ the option which has wrong preposition as per the picture.

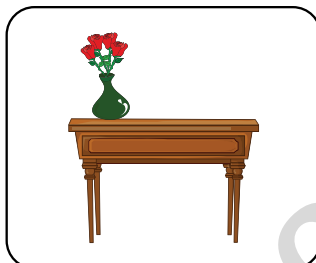
- a) The toys are in the box.

☐

- The toys are on the box.

☒

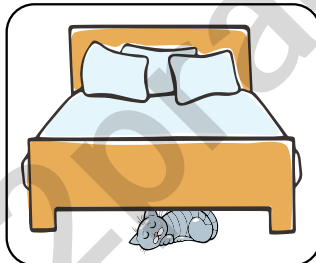
- b) There is a vase above the table.

☐

- There is a vase on the table.

☐

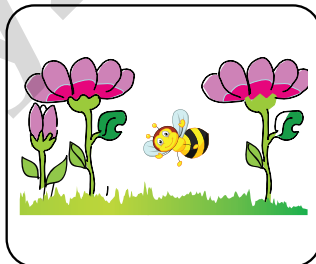
- c) The kitten is on the bed.

☐

- The kitten is below the bed.

☐

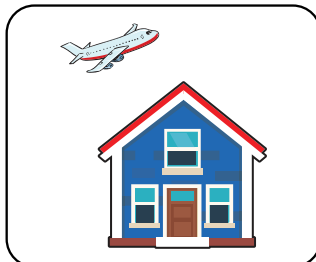
- d) The bee is between two flowers.

☐

- The bee is in the flowers.

☐

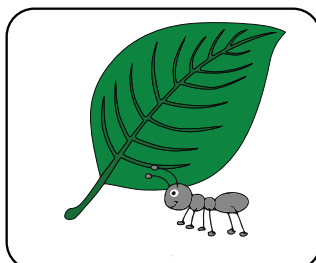
- e) The aeroplane is above the house.

☐

- The aeroplane is on the house.

☐

- f) The ant is at the leaf.

☐

- The ant is near the leaf.

☐